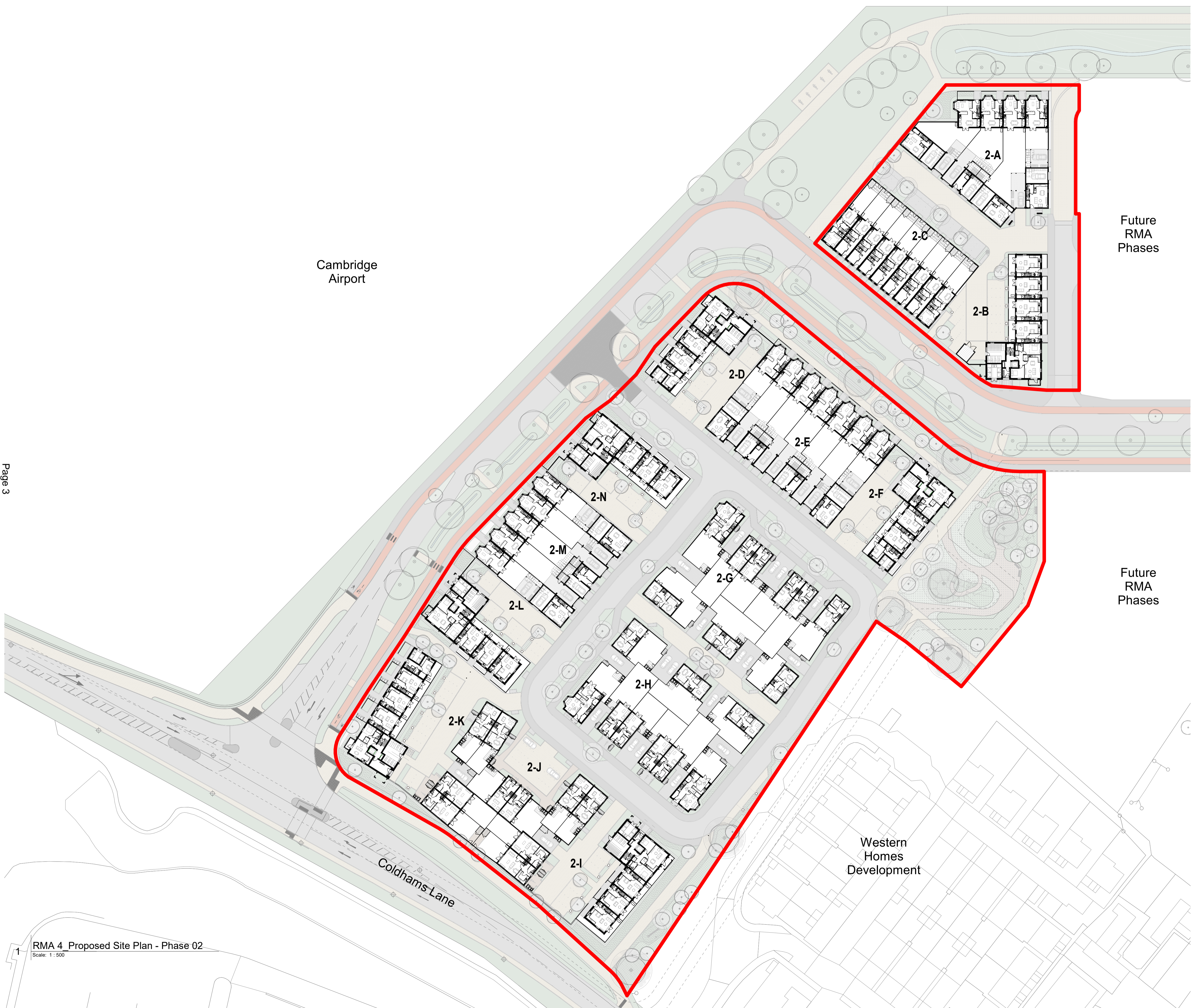


Joint
Development
Control
Committee
20 March 2024



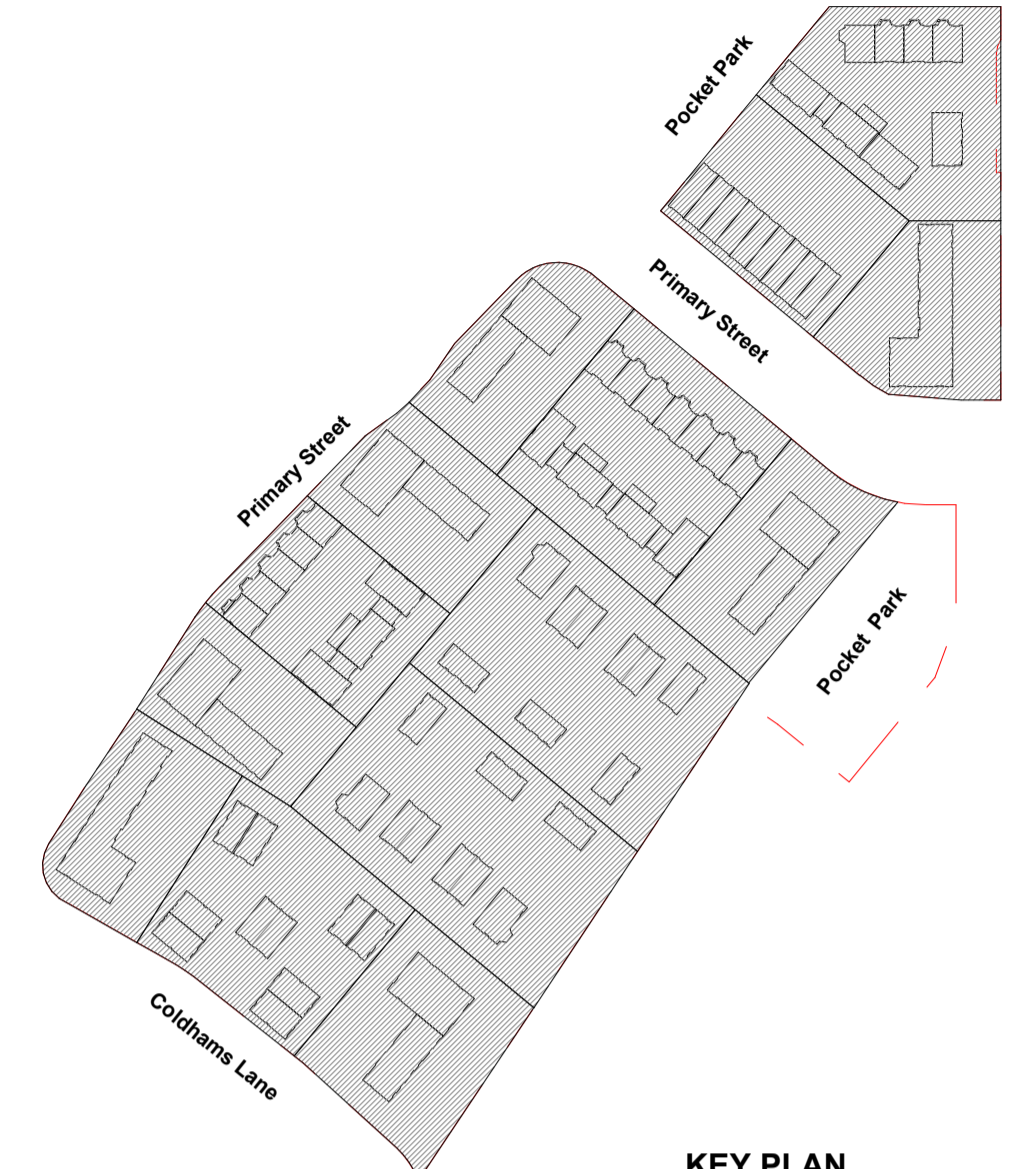
GREATER CAMBRIDGE
SHARED PLANNING

This page is intentionally left blank



GENERAL NOTES:
 This drawing is © 2017 PTE architects.
 Use figured dimensions only. **DO NOT SCALE.**
 All dimensions are in millimetres unless noted otherwise.
 This drawing must be read in conjunction with all other relevant drawings and specifications from the Architect and other consultants.
 If in doubt, ask.

SETTING OUT NOTES:
 All setting out to be confirmed on site prior to construction - any discrepancy must be immediately reported to the Architect.
 All partitions set out to studwork or structure.
 For setting out and specification of M&E services refer to M&E Consultants documents.
 For setting out and specification of structure refer to Structural Engineer's documents.



KEY
 — Planning Application boundary

rev.	date	description	drawn	checked
C4	13.11.23	Issued for Planning - Planners Comments Update	WG	AB
C3	07.09.23	Issued for Planning Update	WG	GT
C2	16.08.23	Issued for Planning Update	WG	AB
C1	10.09.23	Issued for Planning	WG	AB

PLANNING

Diespeker Wharf
 38 Graham Street
 London N1 8JX
 020 7336 7777
 forename.surname@ptea.co.uk
 @ptearchitects
 www.pollardthomasedwards.co.uk



project	job number	drawn	scale	date created
Springstead Village (CHN)	20-069	WG	As indicated@A1	April '23

drawing title	revision number	revision	author
RMA 4 Proposed Site Plan - Phase 02	CHE- PTE- R4-XX-DR-A-10003	C4	A3

This page is intentionally left blank

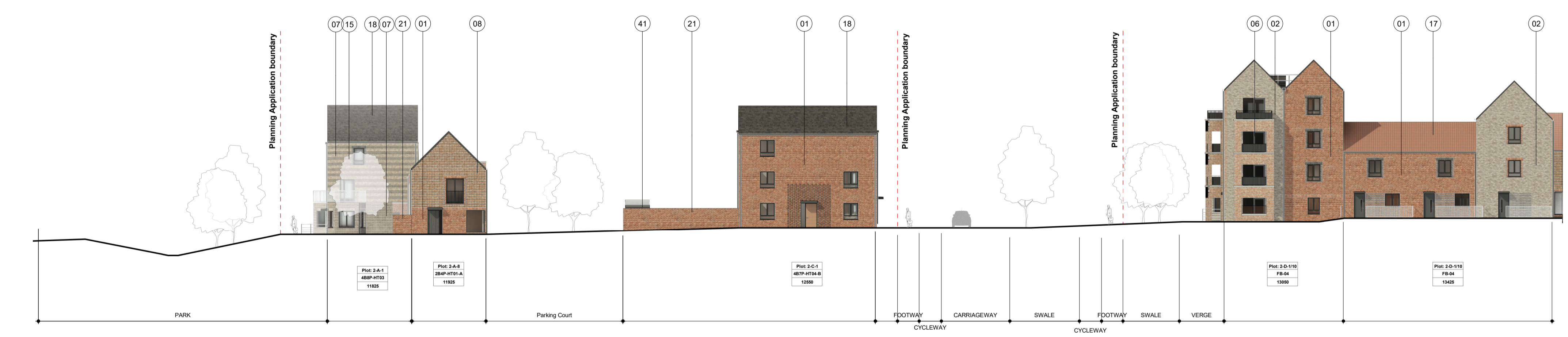
This page is intentionally left blank



1 Elevation 1 - Parcel 2-A/B/C
Scale: 1 : 250



2 Elevation 2 - Parcel 2-A/B/C
Scale: 1 : 250



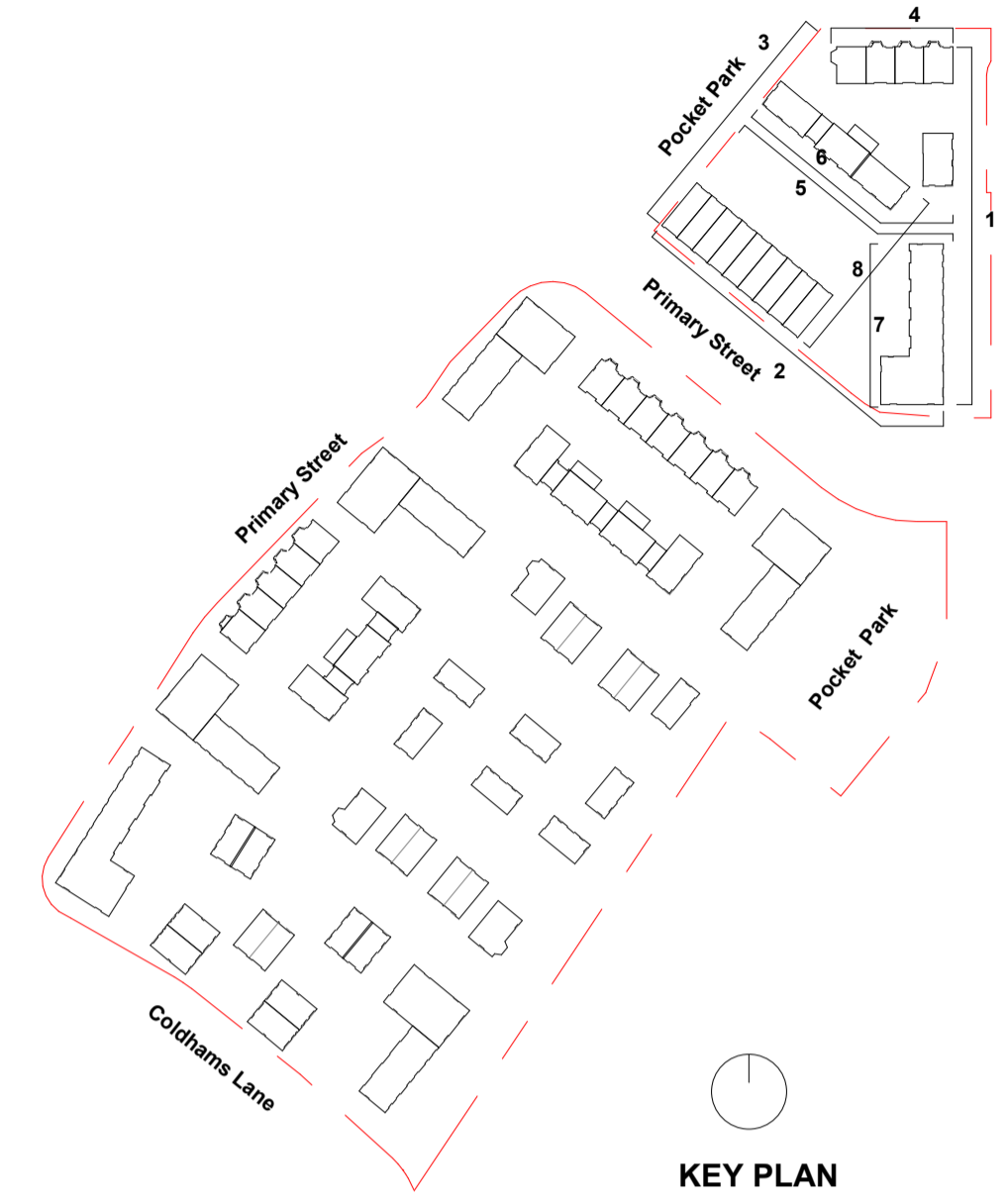
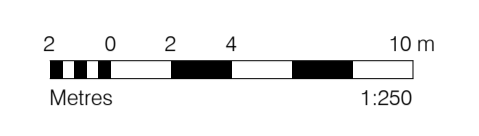
3 Elevation 3 - Parcel 2-A/B/C
Scale: 1 : 250



4 Elevation 4 - Parcel 2-A/B/C
Scale: 1 : 250

GENERAL NOTES:
This drawing is © 2017 PTE architects.
Use figured dimensions only. **DO NOT SCALE.**
All dimensions are in millimetres unless noted otherwise.
This drawing must be read in conjunction with all other relevant drawings and specifications from the Architect and other consultants.
If in doubt, ask.

SETTING OUT NOTES:
All setting out to be confirmed on site prior to construction - any discrepancy must be immediately reported to the Architect.
All partitions set out to studwork or structure.
For setting out and specification of M&E services refer to M&E Consultants documents.
For setting out and specification of structure refer to Structural Engineer's documents.



MATERIAL KEY LEGEND

BRICK & CLADDING

- 01 Soft light red brick
- 02 Light gault brick
- 03 Dark grey brick
- 04 Mid buff brick
- 05 Dark weatherboarding
- 06 Light gault brick with decorative soft light red brick stripes
- 07 Light gault brick with decorative dark grey brick stripes
- 08 Soft light red brick with decorative dark grey brick stripes
- 09 Projecting headers brick detailing
- 10 Corduroy brick detailing
- 11 Hit and miss decorative brickwork
- 12 Brick soldier coursing
- 13 Decorative brick quoining
- 14 Precast stone coping / cill
- 15 Three course brick stripe
- 16 Bedded mortar verge

ROOF

- 17 Mottled red pan tiles
- 18 Dark grey roof tiles
- 19 Folded standing seam roof
- 20 GRP dormer or projecting bay - dark grey, colour to match window frames

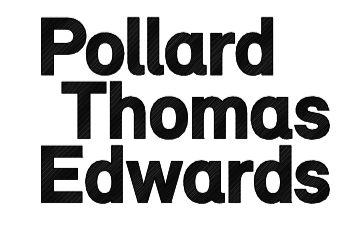
OTHER

- 21 Garden wall (brick colour to match house)
- 22 Estate railing fence
- 23 Dark timber fence
- 24 Metal railing gate - colour to match window frames
- 25 Metal balustrading - colour to match window frames
- 26 Metal balustrading with solid acoustic panel - colour to match window frames
- 27 Juliet balcony - colour to match window frames
- 28 Roof guardrail - 1100mm high
- 29 Dark grey window frames with matching sill
- 30 Dark grey window frames with matching reveal and sill
- 31 Projecting metal canopy - colour to match window frames
- 32 Garage door - colour to match window frames
- 33 Rainwater goods - colour to match window frames
- 34 Pergola
- 35 Brick bench with timber seat - including integrated signage and light
- 36 ASHP unit
- 37 Carport
- 38 Carport Gate
- 39 Bollard
- 40 Ev
- 41 Dark weatherboarding clad store
- 42 Custom house materials - see individual house type sheets

rev.	date	description	drawn	checked
C2	08.09.23	Issued for Planning Update	WG	GT
C1	10.09.23	Issued for Planning	WG	AB

PLANNING

Diespeker Wharf
38 Graham Street
London N1 8JX
020 7336 7777
forename.surname@pte.a.co.uk
@ptearchitects
www.pollardthomasedwards.co.uk



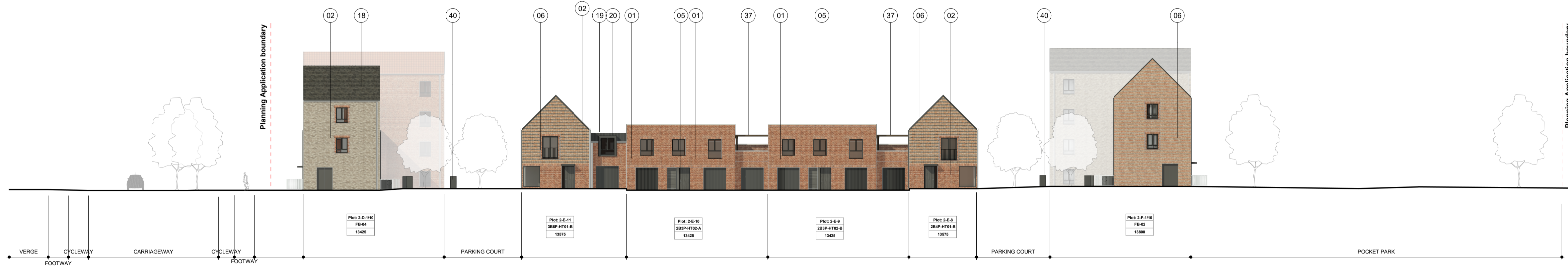
project	job number	drawn	scale	date created
Springstead Village (CHN)	20-069	WG	As indicated@A1	April '23

drawing title	revision number	revision	submittal
RMA 4_GA Elevation - Parcel 2-A/B/C - 01	CHE- PTE- R4-ZZ-DR-A-10301	C2	A3

This page is intentionally left blank



1 Elevation 1 - Parcel 2-D/E/F
Scale: 1 : 250



2 Elevation 2 - Parcel 2-D/E/F
Scale: 1 : 250



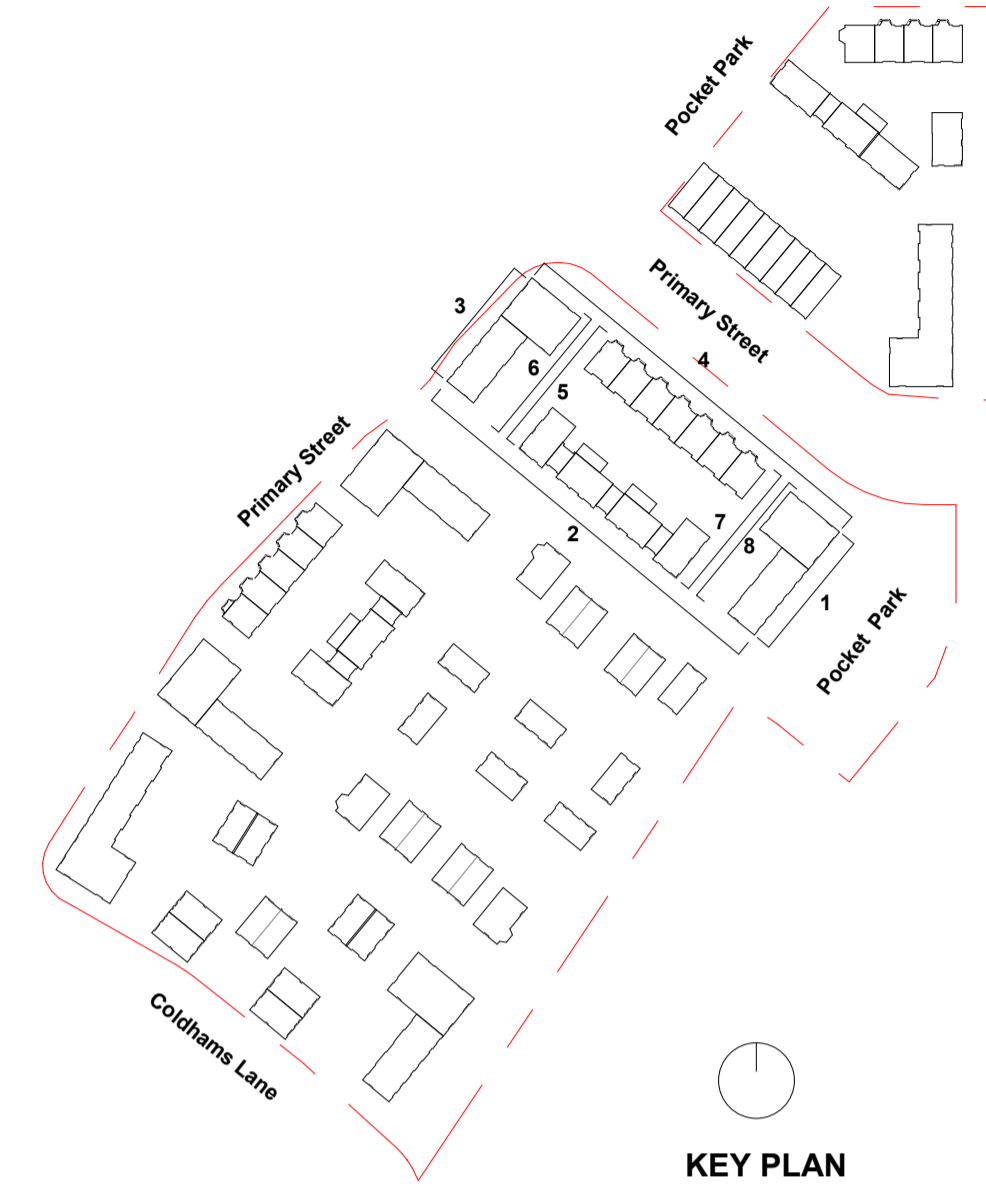
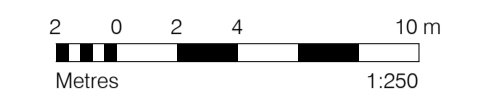
3 Elevation 3 - Parcel 2-D/E/F
Scale: 1 : 250



4 Elevation 4 - Parcel 2-D/E/F
Scale: 1 : 250

GENERAL NOTES:
This drawing is © 2017 PTE architects.
Use figured dimensions only. **DO NOT SCALE.**
All dimensions are in millimetres unless noted otherwise.
This drawing must be read in conjunction with all other relevant drawings and specifications from the Architect and other consultants.
If in doubt, ask.

SETTING OUT NOTES:
All setting out to be confirmed on site prior to construction - any discrepancy must be immediately reported to the Architect.
All partitions set out to studwork or structure.
For setting out and specification of M&E services refer to M&E Consultants documents.
For setting out and specification of structure refer to Structural Engineer's documents.



MATERIAL KEY LEGEND

BRICK & CLADDING

- 01 Soft light red brick
- 02 Light gault brick
- 03 Dark grey brick
- 04 Mid buff brick
- 05 Dark weatherboarding
- 06 Light gault brick with decorative soft light red brick stripes
- 07 Light gault brick with decorative dark grey brick stripes
- 08 Soft light red brick with decorative dark grey brick stripes
- 09 Projecting headers brick detailing
- 10 Corduroy brick detailing
- 11 Hit and miss decorative brickwork
- 12 Brick soldier coursing
- 13 Decorative brick quoins
- 14 Precast stone coping / cill
- 15 Three course brick stripe
- 16 Bedded mortar verge

ROOF

- 17 Mottled red pan tiles
- 18 Dark grey roof tiles
- 19 Folded standing seam roof
- 20 GRP dormer or projecting bay - dark grey, colour to match window frames

OTHER

- 21 Garden wall (brick colour to match house)
- 22 Estate railing fence
- 23 Dark timber fence
- 24 Metal railing gate - colour to match window frames
- 25 Metal balustrating - colour to match window frames
- 26 Metal balustrating with solid acoustic panel - colour to match window frames
- 27 Juliet balcony - colour to match window frames
- 28 Roof guardrail - 1100mm high
- 29 Dark grey window frames with matching sill
- 30 Dark grey window frames with matching reveal and sill
- 31 Projecting metal canopy - colour to match window frames
- 32 Garage door - colour to match window frames
- 33 Rainwater goods - colour to match window frames
- 34 Pergola
- 35 Brick bench with timber seat - including integrated signage and light
- 36 ASHP unit
- 37 Carport
- 38 Carport Gate
- 39 Bollard
- 40 Ev
- 41 Dark weatherboarding clad store
- 42 Custom house materials - see individual house type sheets

P1	10.08.23	Issued for Planning	WG	AB
rev.	date	description	drawn	checked
drawing status				

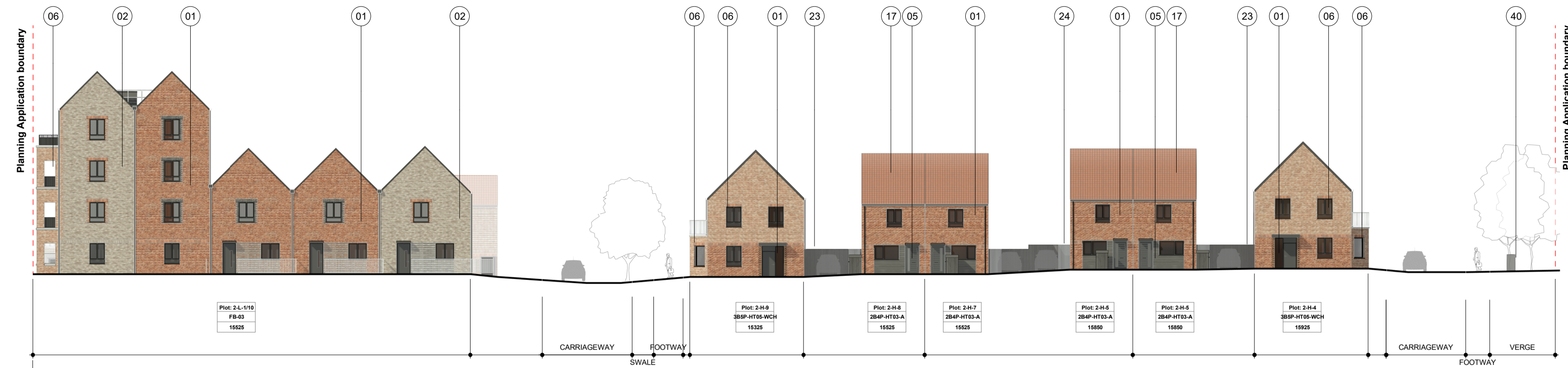
PLANNING

Diespeker Wharf
38 Graham Street
London N1 8JX
020 7336 7777
forename.surname@pte.a.co.uk
@ptearchitects
www.pollardthomasedwards.co.uk

**Pollard
Thomas
Edwards**

project	job number	drawn	scale	date created
Springstead Village (CHN)	20-069	WG	As indicated@A1	April '23
drawing title	drawing number	revision	submittal	
RMA_4_GA Elevation - Parcel 2-D/E/F - 01	CHE- PTE- R4-ZZ-DR-A-10303	P1	A3	

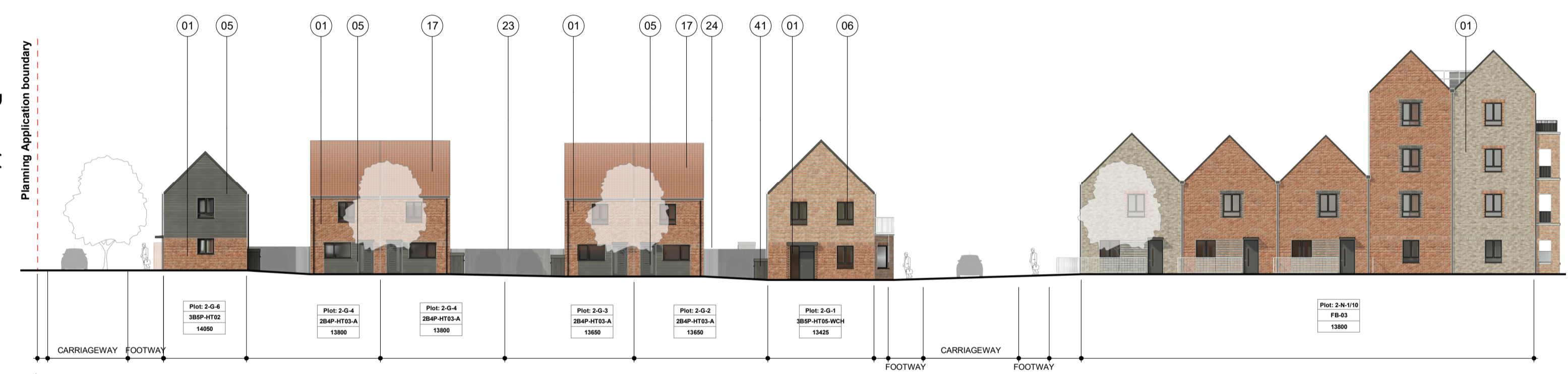
This page is intentionally left blank



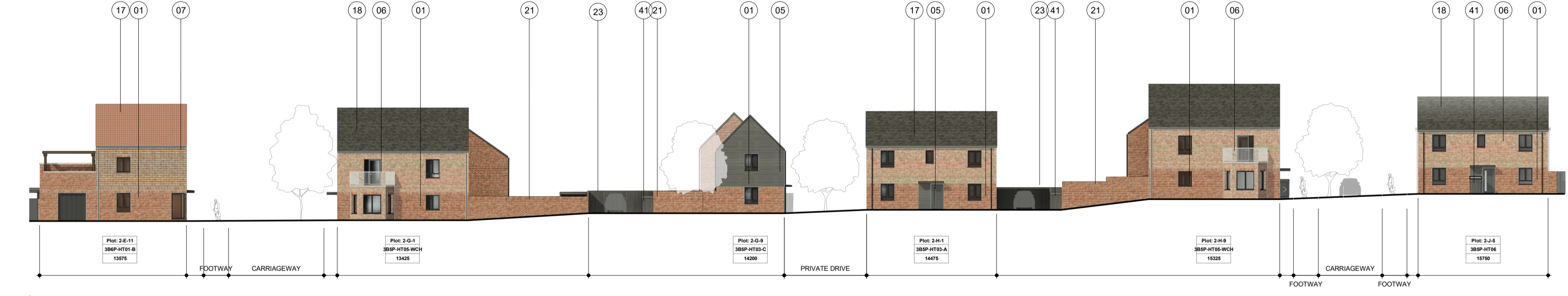
1 Elevation 1 - Parcel 2-G/H
Scale: 1 : 250



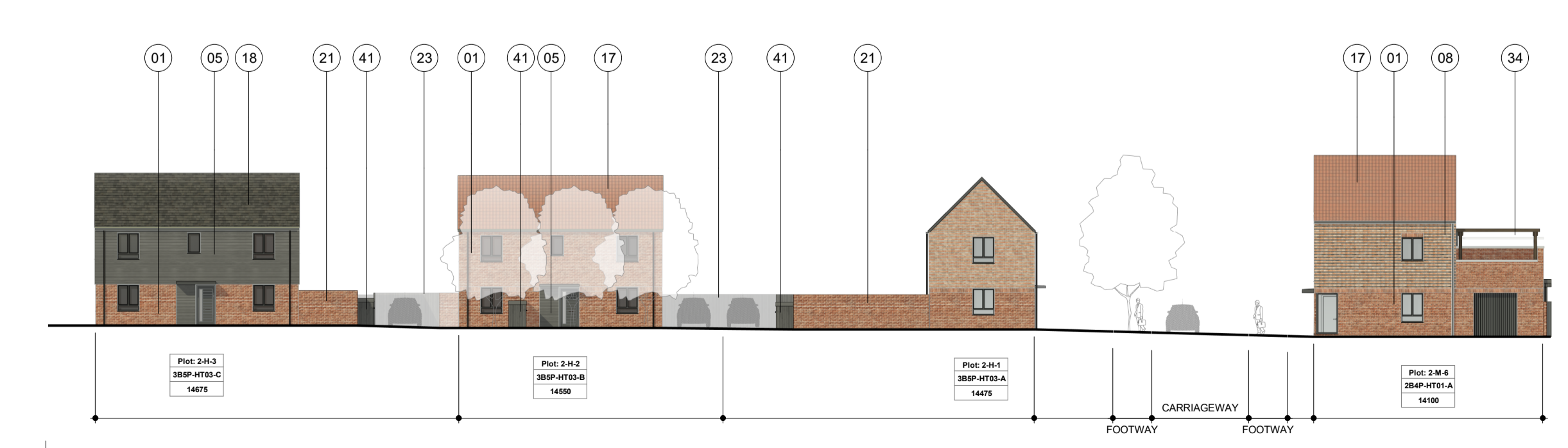
2 Elevation 2 - Parcel 2-G/H
Scale: 1 : 250



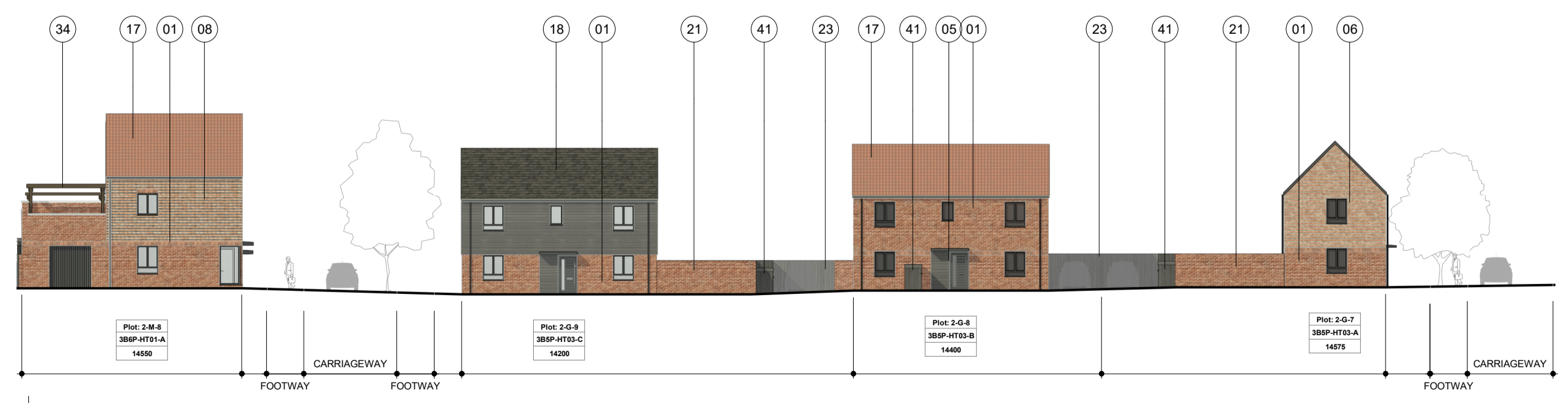
3 Elevation 3 - Parcel 2-G/H
Scale: 1 : 250



4 Elevation 4 - Parcel 2-G/H
Scale: 1 : 250



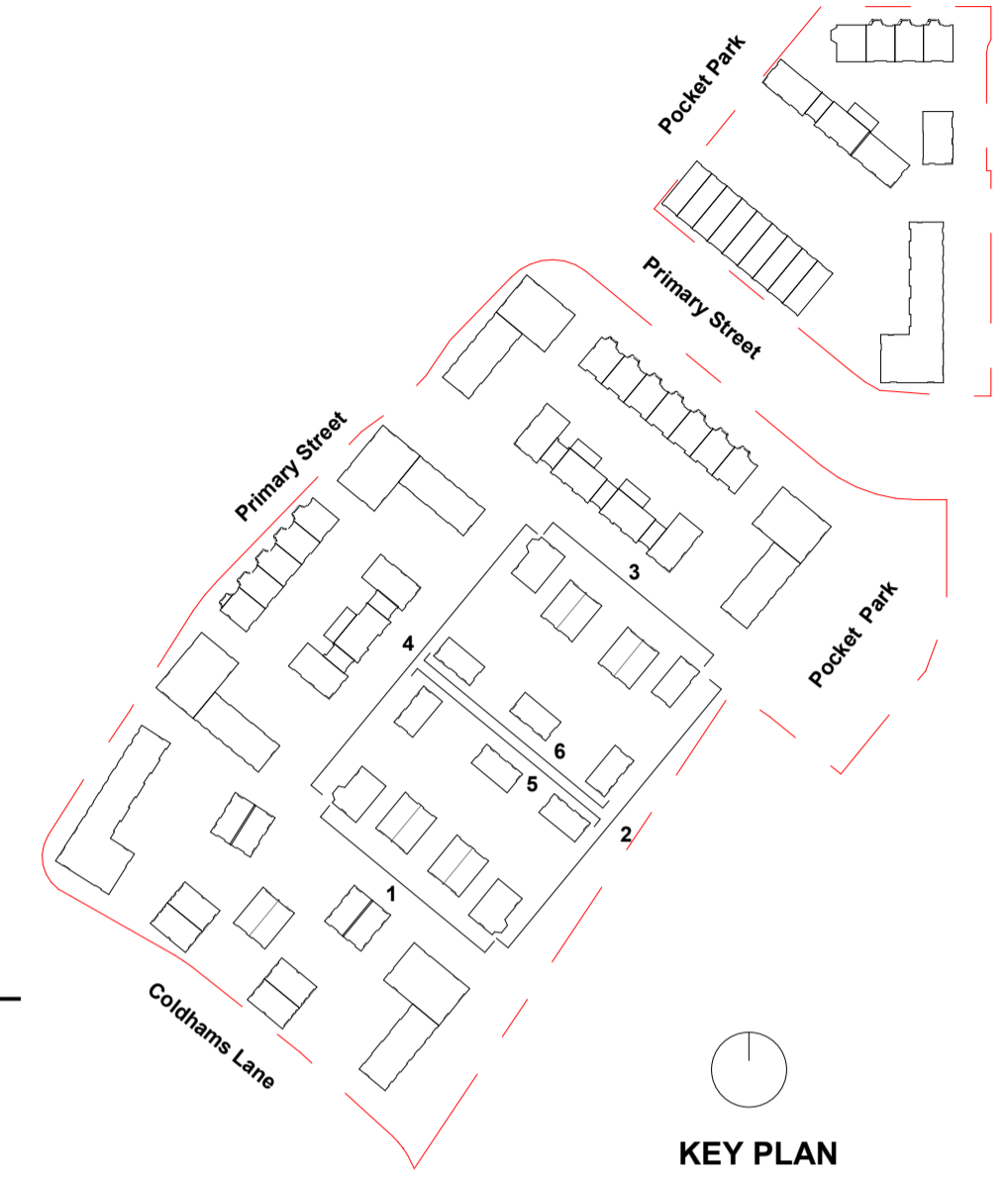
5 Elevation 5 - Parcel 2-G/H
Scale: 1 : 250



6 Elevation 6 - Parcel 2-G/H
Scale: 1 : 250

GENERAL NOTES:
All setting out to be confirmed on site prior to construction - any discrepancy must be immediately reported to the Architect.
SCALE:
All dimensions are in millimetres unless noted otherwise.
This drawing must be read in conjunction with all other relevant drawings and specifications from the Architect and other consultants.
If in doubt, ask.

SETTING OUT NOTES:
All setting out to face of structure or to grid. All partitions set out to studwork or structure.
For setting out and specification of M&E services refer to M&E Consultants documents.
For setting out and specification of structure refer to Structural Engineer's documents.



Page 11

MATERIAL KEY LEGEND

BRICK & CLADDING

- 01 Soft light red brick
- 02 Light gault brick
- 03 Dark grey brick
- 04 Mid buff brick
- 05 Dark weatherboarding
- 06 Light gault brick with decorative soft light red brick stripes
- 07 Light gault brick with decorative dark grey brick stripes
- 08 Soft light red brick with decorative dark grey brick stripes
- 09 Projecting headers brick detailing
- 10 Corduroy brick detailing
- 11 Hit and miss decorative brickwork
- 12 Brick soldier coursing
- 13 Decorative brick quoining
- 14 Precast stone coping / cill
- 15 Three course brick stripe
- 16 Bedded mortar verge

ROOF

- 17 Mottled red pan tiles
- 18 Dark grey roof tiles
- 19 Folded standing seam roof
- 20 GRP dormer or projecting bay - dark grey, colour to match window frames

OTHER

- 21 Garden wall (brick colour to match house)
- 22 Estate railing fence
- 23 Dark timber fence
- 24 Metal railing gate - colour to match window frames
- 25 Metal balustrading - colour to match window frames
- 26 Metal balustrading with solid acoustic panel - colour to match window frames
- 27 Juliet balcony - colour to match window frames
- 28 Roof guardrail - 1100mm high
- 29 Dark grey window frames with matching sill
- 30 Dark grey window frames with matching reveal and sill
- 31 Projecting metal canopy - colour to match window frames
- 32 Garage door - colour to match window frames
- 33 Rainwater goods - colour to match window frames
- 34 Pergola
- 35 Brick bench with timber seat - including integrated signage and light
- 36 ASPH unit
- 37 Carport
- 38 Carport Gate
- 39 Bollard
- 40 Ev
- 41 Dark weatherboarding clad store
- 42 Custom house materials - see individual house type sheets

P1	10.08.23	Issued for Planning	WG	AB
rev.	date	description	drawn	checked
drawing status				

PLANNING

Diespeker Wharf
38 Graham Street
London N1 8JX
020 7336 7777
forename.surname@pte.a.co.uk
@ptearchitects
www.pollardthomasedwards.co.uk

Pollard Thomas Edwards

project	job number	drawn	scale	date created
Springstead Village (CHN)	20-069	WG	As indicated@A1	April '23
drawing title	drawing number	revision	submittal	
RMA_4_GA Elevation - Parcel 2-G/H	CHE- PTE- R4-ZZ-DR-A-10305	P1	A3	

This page is intentionally left blank



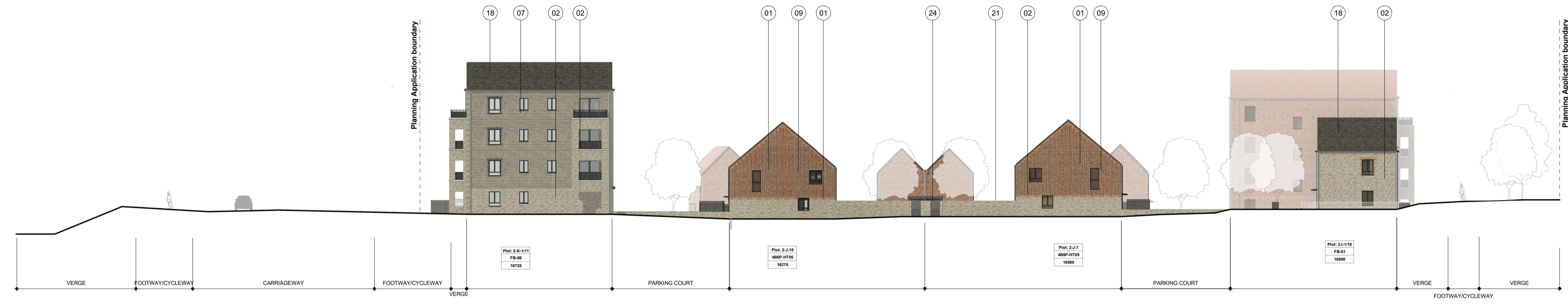
1 Elevation 1 - Parcel 2-I/J/K
Scale: 1 : 250



2 Elevation 2 - Parcel 2-I/J/K
Scale: 1 : 250



5 Elevation 5 - Parcel 2-I/J/K
Scale: 1 : 250



3 Elevation 3 - Parcel 2-I/J/K
Scale: 1 : 250



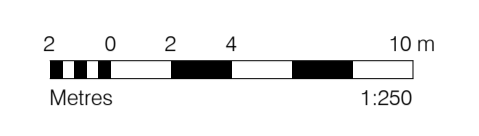
4 Elevation 4 - Parcel 2-I/J/K
Scale: 1 : 250



6 Elevation 6 - Parcel 2-I/J/K
Scale: 1 : 250

GENERAL NOTES:
This drawing is © 2017 PTE architects.
Use figured dimensions only. **DO NOT SCALE.**
All dimensions are in millimetres unless noted otherwise.
This drawing must be read in conjunction with all other relevant drawings and specifications from the Architect and other consultants.
If in doubt, ask.

SETTING OUT NOTES:
All setting out to be confirmed on site prior to construction - any discrepancy must be immediately reported to the Architect.
All partitions set out to studwork or structure.
For setting out and specification of M&E services refer to M&E Consultants documents.
For setting out and specification of structure refer to Structural Engineer's documents.



MATERIAL KEY LEGEND

BRICK & CLADDING

- 01 Soft light red brick
- 02 Light gault brick
- 03 Dark grey brick
- 04 Mid buff brick
- 05 Dark weatherboarding
- 06 Light gault brick with decorative soft light red brick stripes
- 07 Light gault brick with decorative dark grey brick stripes
- 08 Soft light red brick with decorative dark grey brick stripes
- 09 Projecting headers brick detailing
- 10 Corduroy brick detailing
- 11 Hit and miss decorative brickwork
- 12 Brick soldier coursing
- 13 Decorative brick quoining
- 14 Precast stone coping / cill
- 15 Three course brick stripe
- 16 Bedded mortar verge

ROOF

- 17 Mottled red pan tiles
- 18 Dark grey roof tiles
- 19 Folded standing seam roof
- 20 GRP dormer or projecting bay - dark grey, colour to match window frames

OTHER

- 21 Garden wall (brick colour to match house)
- 22 Estate railing fence
- 23 Dark timber fence
- 24 Metal railing gate - colour to match window frames
- 25 Metal balustrading - colour to match window frames
- 26 Metal balustrading with solid acoustic panel - colour to match window frames
- 27 Juliet balcony - colour to match window frames
- 28 Roof guardrail - 1100mm high
- 29 Dark grey window frames with matching sill
- 30 Dark grey window frames with matching reveal and sill
- 31 Projecting metal canopy - colour to match window frames
- 32 Garage door - colour to match window frames
- 33 Rainwater goods - colour to match window frames
- 34 Pergola
- 35 Brick bench with timber seat - including integrated signage and light
- 36 ASHP unit
- 37 Carport
- 38 Carport Gate
- 39 Bollard
- 40 Ev
- 41 Dark weatherboarding clad store
- 42 Custom house materials - see individual house type sheets

PI	10.08.23	Issued for Planning	WG	AB
rev.	date	description	drawn	checked
drawing status				

PLANNING

Diespeker Wharf
38 Graham Street
London N1 8JX
020 7336 7777
forename.surname@pte.a.co.uk
@ptearchitects
www.pollardthomasedwards.co.uk

Pollard Thomas Edwards

project	job number	drawn	scale	date created
Springstead Village (CHN)	20-069	WG	As indicated@A1	April '23
drawing title	drawing number	revision	submittal	
RMA_4_GA Elevation - Parcel 2-I/J/K - 01	CHE- PTE- R4-ZZ-DR-A-10306	P1	A3	

This page is intentionally left blank



1 Elevation 1 - Parcel 2-L/M/N
Scale: 1 : 250



2 Elevation 2 - Parcel 2-L/M/N
Scale: 1 : 250



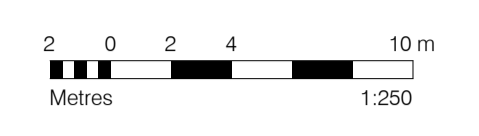
3 Elevation 3 - Parcel 2-L/M/N
Scale: 1 : 250



4 Elevation 4 - Parcel 2-L/M/N
Scale: 1 : 250

GENERAL NOTES:
This drawing is © 2017 PTE architects.
Use figured dimensions only. **DO NOT SCALE.**
All dimensions are in millimetres unless noted otherwise.
This drawing must be read in conjunction with all other relevant drawings and specifications from the Architect and other consultants.
If in doubt, ask.

SETTING OUT NOTES:
All setting out to be confirmed on site prior to construction - any discrepancy must be immediately reported to the Architect.
All setting out to face of structure or to grid. All partitions set out to studwork or structure.
For setting out and specification of M&E services refer to M&E Consultants documents.
For setting out and specification of structure refer to Structural Engineer's documents.



Page 15

MATERIAL KEY LEGEND

BRICK & CLADDING

- 01 Soft light red brick
- 02 Light gault brick
- 03 Dark grey brick
- 04 Mid buff brick
- 05 Dark weatherboarding
- 06 Light gault brick with decorative soft light red brick stripes
- 07 Light gault brick with decorative dark grey brick stripes
- 08 Soft light red brick with decorative dark grey brick stripes
- 09 Projecting headers brick detailing
- 10 Corduroy brick detailing
- 11 Hit and miss decorative brickwork
- 12 Brick soldier coursing
- 13 Decorative brick quoining
- 14 Precast stone coping / cill
- 15 Three course brick stripe
- 16 Bedded mortar verge

ROOF

- 17 Mottled red pan tiles
- 18 Dark grey roof tiles
- 19 Folded standing seam roof
- 20 GRP dormer or projecting bay - dark grey, colour to match window frames

OTHER

- 21 Garden wall (brick colour to match house)
- 22 Estate railing fence
- 23 Dark timber fence
- 24 Metal railing gate - colour to match window frames
- 25 Metal balustrading - colour to match window frames
- 26 Metal balustrading with solid acoustic panel - colour to match window frames
- 27 Juliet balcony - colour to match window frames
- 28 Roof guardrail - 1100mm high
- 29 Dark grey window frames with matching sill
- 30 Dark grey window frames with matching reveal and sill
- 31 Projecting metal canopy - colour to match window frames
- 32 Garage door - colour to match window frames
- 33 Rainwater goods - colour to match window frames
- 34 Pergola
- 35 Brick bench with timber seat - including integrated signage and light
- 36 ASPH unit
- 37 Carport
- 38 Carport Gate
- 39 Bollard
- 40 Ev
- 41 Dark weatherboarding clad store
- 42 Custom house materials - see individual house type sheets

P1 10.08.23 Issued for Planning WG AB
rev. date description drawn scaled
drawing status

PLANNING

Diespeker Wharf
38 Graham Street
London N1 8JX
020 7336 7777
forename.surname@pte.a.co.uk
@ptearchitects
www.pollardthomasedwards.co.uk

Pollard Thomas Edwards

project	job number	drawn	scale	date created
Springstead Village (CHN)	20-069	WG	As indicated@A1	April '23
drawing title	revision number	reason	submitter	
RMA_4_GA Elevation - Parcel 2-L/M/N - 01	CHE- PTE- R4-ZZ-DR-A-10308	P1	A3	

This page is intentionally left blank

21/02957/COND29A & 21/03035/COND29

Site address: West Anglia Main Line Land Adjacent to Cambridge Biomedical Campus

Proposal:

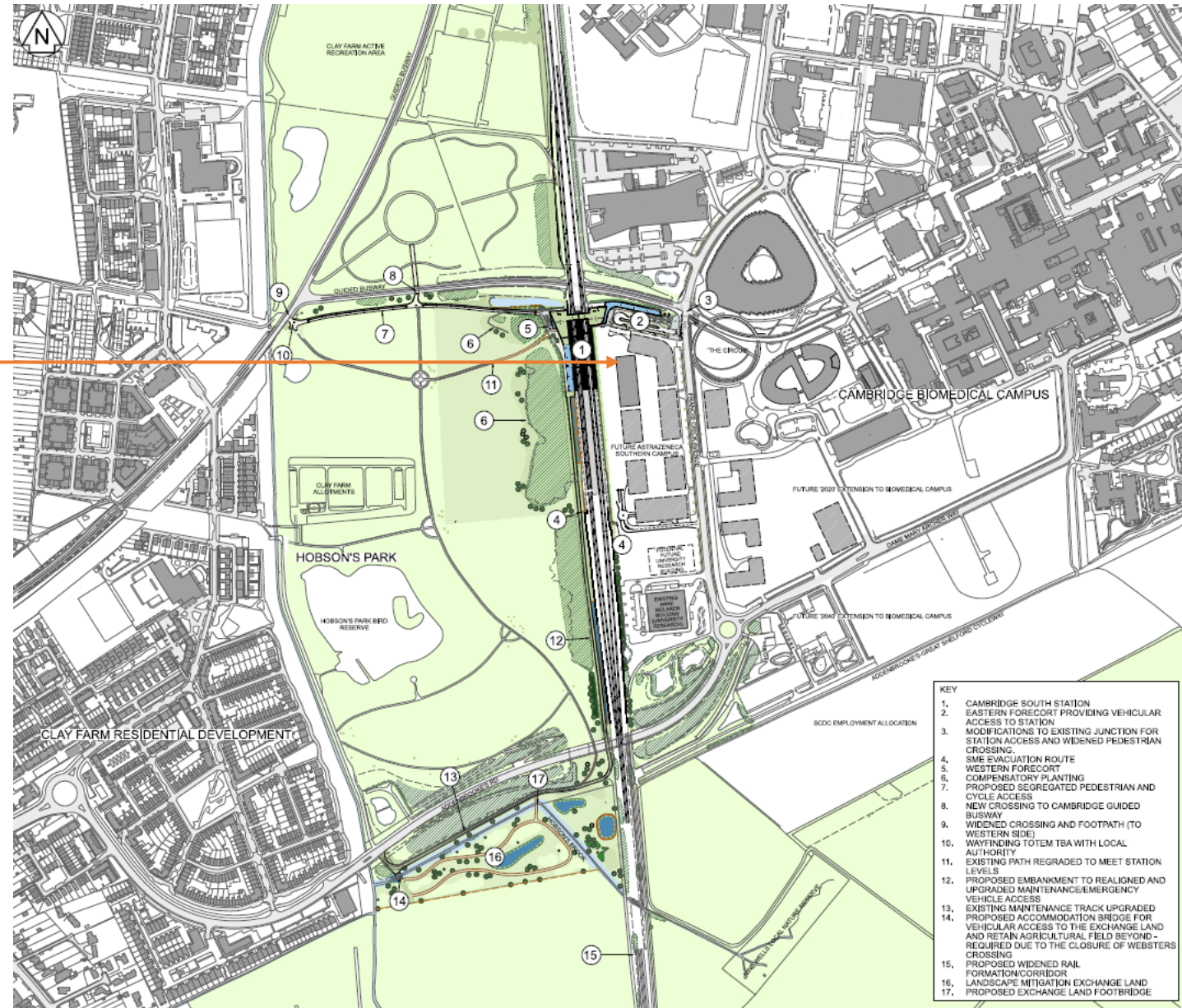
Page 17 Submission of details required by condition 29 (hard and soft landscaping) of the deemed planning consent associated with the Network Rail (Cambridge South Infrastructure Enhancements) Order 2022 (Local Planning Authority Reference 21/02957/TWA)

Submission of details required by condition 29 (hard and soft landscaping) of the deemed planning consent associated with the Network Rail (Cambridge South Infrastructure Enhancements) Order 2022 (Local Planning Authority Reference 21/03035/TWA)

Location Plan

Station location

Page 18

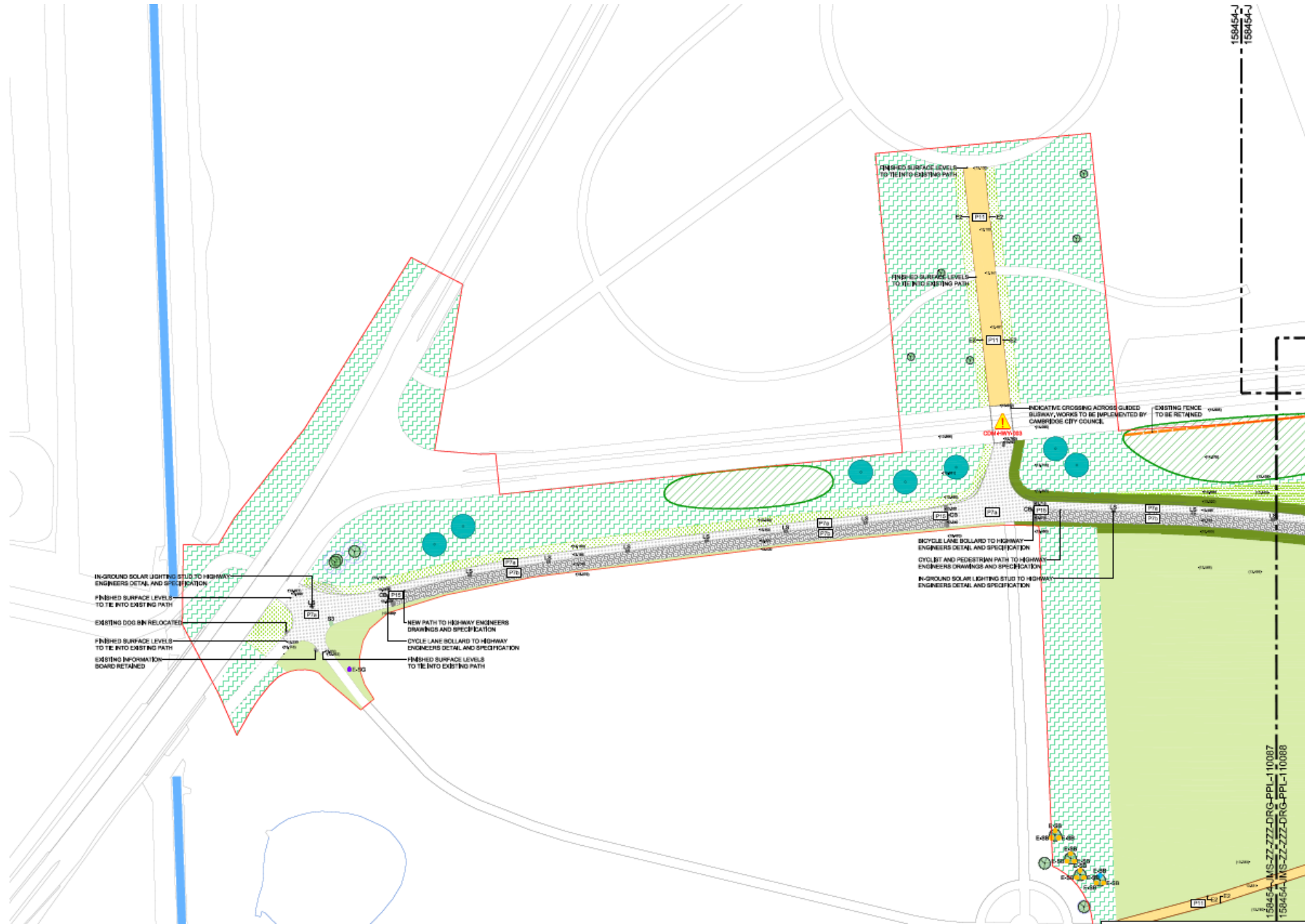


East and west forecourt and access across Hobson Park

Page 19



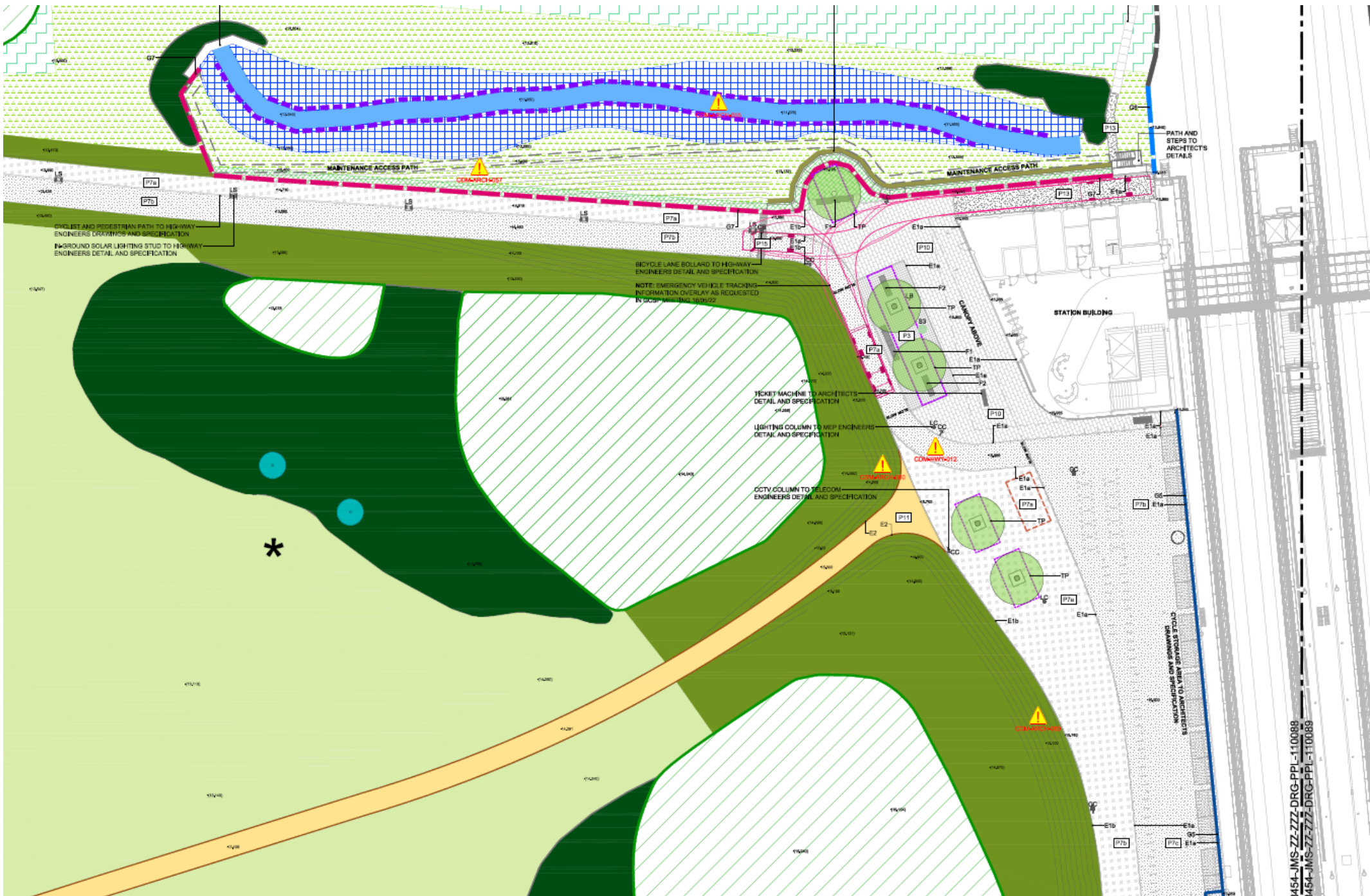
New access path across Hobson Park



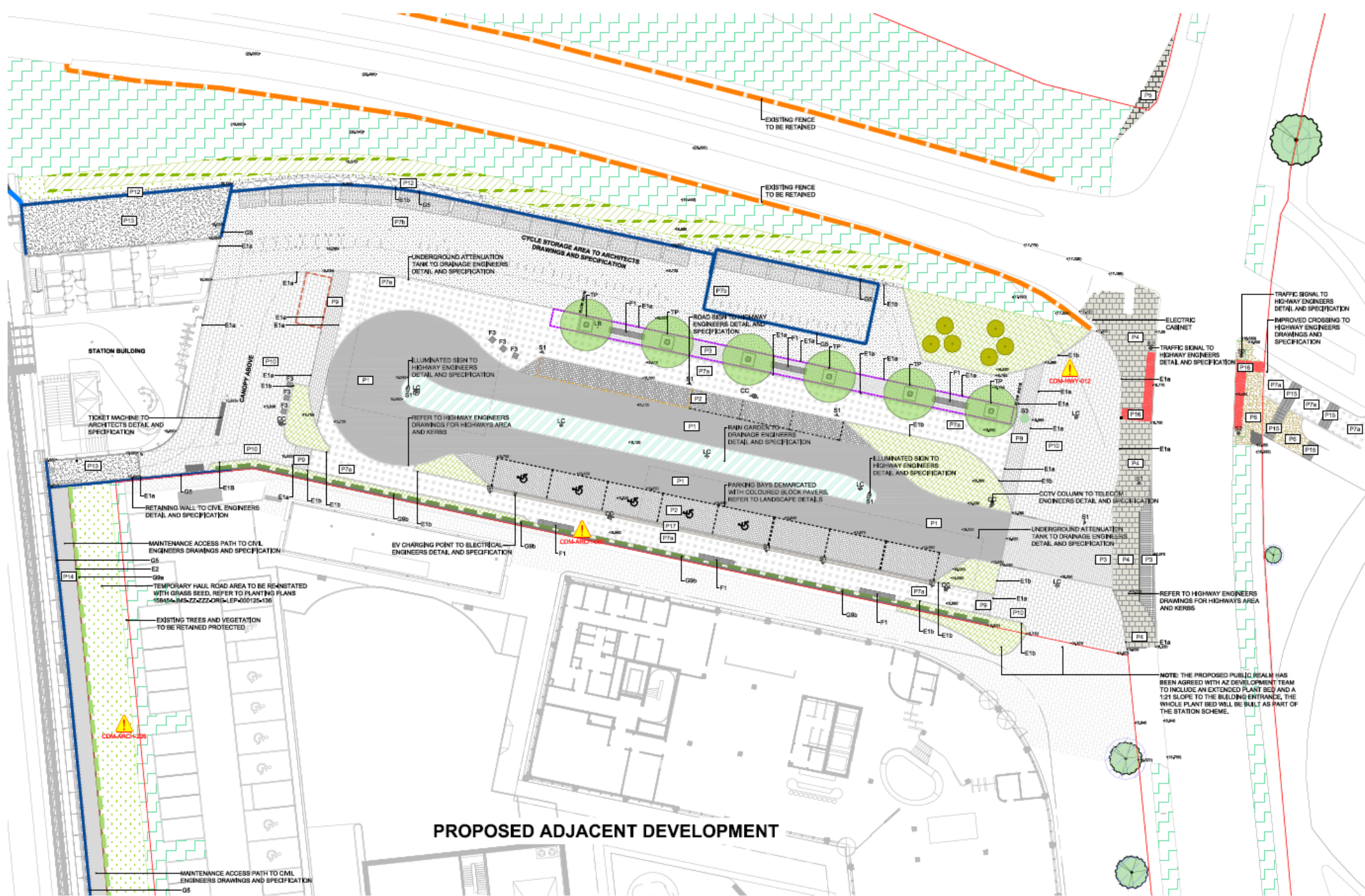
158454-J
158454-J

158454-MS-ZZ-ZZZ-DRG-PPL-110087
158454-MS-ZZ-ZZZ-DRG-PPL-110088

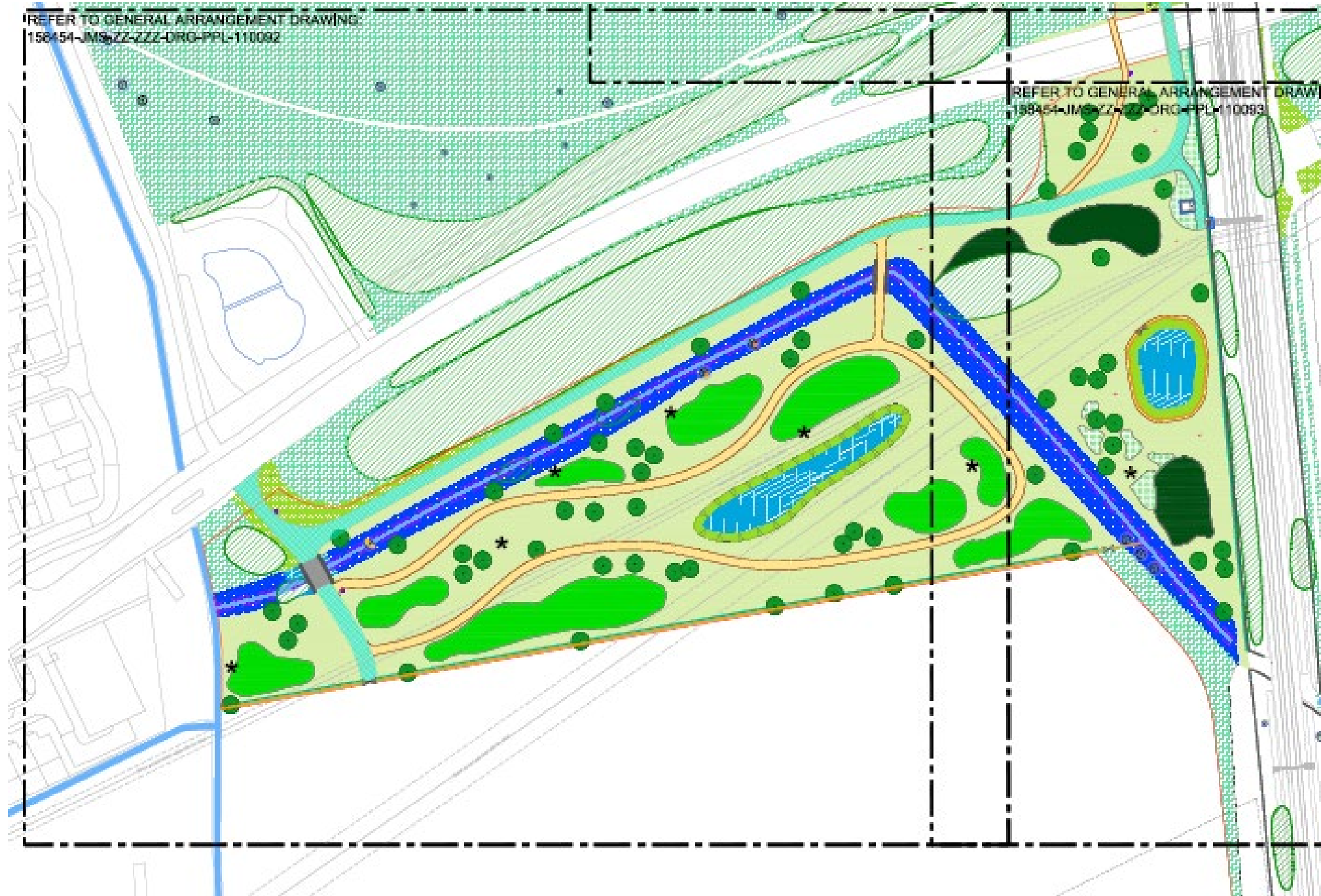
Western Forecourt



Eastern forecourt



The exchange land



Trackside landscaping to north and south of station

